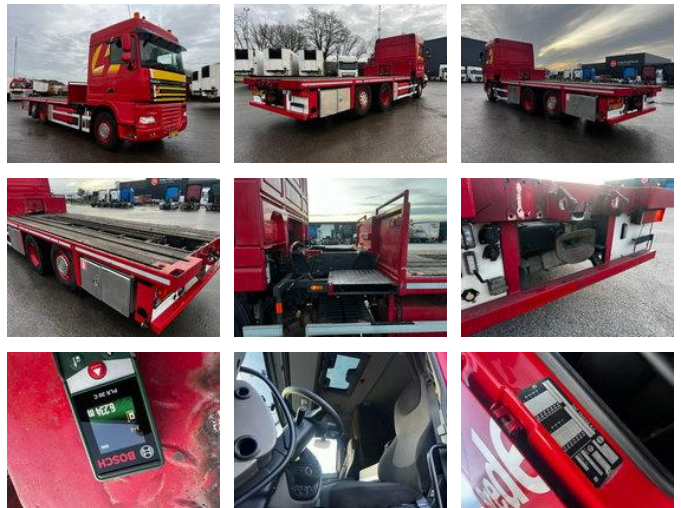


# DAF XF 105.460 SC 6x2, NL Truck

## General features

Brand	DAF
Model	XF 105.460
Subcategory	Drop side
Licence plate	BZ-PT-66
Odometer reading	972.937km
Construction year	2011
Date of first registration	07-12-2011
Color	Red
Condition	Used
General condition	Good
Fuel	Diesel
Emission class	Euro 5
Reference	D13331



## Characteristics

Empty weight	16.395kg
Load capacity	11.605kg
GVW	28.000kg
Length	970cm
Width	255cm
Cabin	Sleeper cabin
Cylinder contents	12.902cc

# DAF XF 105.460 SC 6x2, NL Truck

## Technical specifications

Number of axes	3
Axis configuration	6x2
Transmission	Automatic
Engine output	340kw

## Description

DAF XF 105.460 SC 6x2 07-12-2011 Automaat Euro 5 Airco Koelkast Liftas Standkachel slaapcabine Vangmuil koppeling Lengte bak 6,25 m Bladvering voor

## Accessories

- Trailer coupling
- Automatic
- Onboard Computer
- Central doorlocking
- Air Suspension Seats
- Radio/CD player
- Immobilizer
- Spotlight rear
- Anti-lock braking system
- Air conditioning
- Aluminium fuel tank
- Refrigerator
- Air horn
- Sleeper cab
- Vehicle heater
- Coupling
- Visor
- Air suspension system
- Disc brakes
- Power steering
- Electric windows
- EBS
- Heater