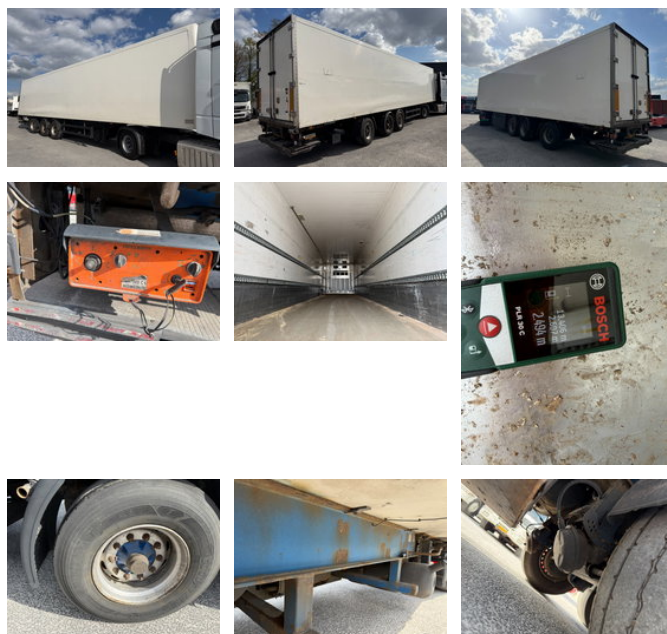


Sor SP71 Carrier Vector 1850, BPW

General features

Brand	Sor
Subcategory	Refrigerated
Licence plate	OK-97-SH
Construction year	2008
Date of first registration	21-11-2008
Color	White
Condition	Used
General condition	generalCondition.average
Reference	S3422



Characteristics

Empty weight	8.500kg
Load capacity	33.500kg
GVW	42.000kg
Length	1.404cm
Width	260cm

Sor SP71 Carrier Vector 1850, BPW

Technical specifications

Number of axes

3

Accessories